



---

# CATALOGUE

---

**LED profiles  
components**





# Summary

## LED strips

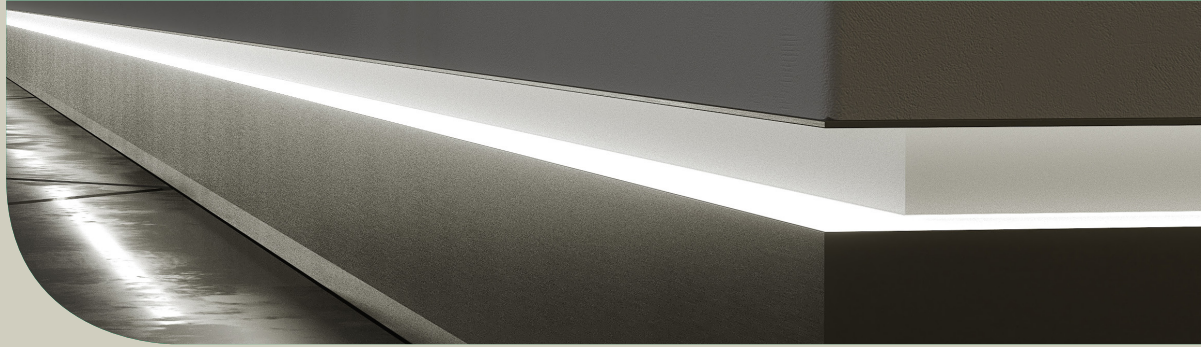
Flexible side LED strip 120LED/m	4
Spotless flexible LED strip 238LED/m	5
Flexible LED strip 70LED/m	6
Flexible LED strip 140LED/m	7
High efficiency flexible LED strip 128LED/m	8
Long length flexible LED strips 120LED/m	9
RGBW flexible LED strip 84LED/m	10
RGB flexible LED strip 126LED/m	11
Tunable white flexible LED strip 112LED/m	12
Color flexible LED Strip	13

## Aluminium profiles

Aluminium LED profile 1208 (X)	16
Aluminium LED profile 1616 (C)	17
Aluminium LED profile 1606 (D)	18
Aluminium LED profile 2218 (G)	19
Aluminium LED profile 1718 (Y)	20
Aluminium LED profile 2207 (Z)	21
Aluminium LED profile 4330 (ILED0)	22
Aluminium LED profile 4310 (SOLIS)	23
Aluminium LED profile 5130 (INSO)	24
Aluminium LED profile 1911	25

## Power supplies

Low power Arditi driver (CV)	28
Low power MW driver / LPV series (CV)	29
Low power dimmable MW driver / NPF series (CV + CC)	30
PWM output dimmable MW driver / PWM series (CV)	31
Mains dimmable Arditi driver (CV)	32
High power dimmable MW driver / ELG series (CV + CC)	33
High power dimmable MW driver / HLG series (CV + CC)	34
Din rail MW driver / HDR & NDR series (CV)	35
DALI-PWM MW signal converter	36
Low power Arditi driver (CC)	37
Multi power dimmable MW driver / LCM series (CC)	38



## LED STRIPS

## LED STRIPS

### FLEXIBLE SIDE LED STRIP 120LED/M



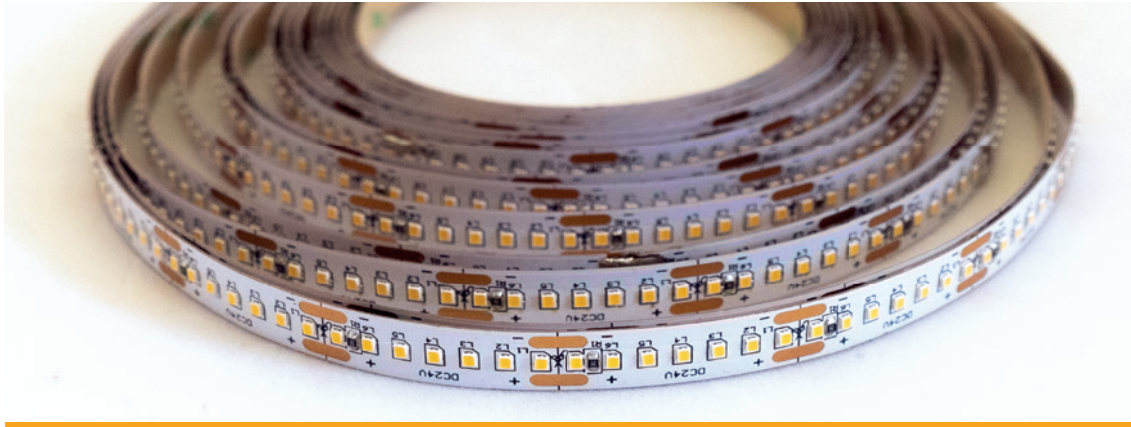
Property	Value
Power consumption	72W
Input voltage	24 VDC CV
Beam angle	120°
Lumen output	105 lm/W
Dimmable	YES
Water and dust protection	IP20
Cooling	Passive
LED package	3014 LED
Dimensions	L 5m / W 8mm
Cutting dimension	5cm (20 groups of 6 LED)
LED/m	120
Life span	>36 000h
Certifications	CE, RoHS, UL PCB
Warranty period	3 Years
CRI	>80
MacAdam step	3

References	Power/m	Lumen/m	CCT*
UPS72EDN912030	14,4W	1500 lm/m	3000K

\*Other CCT on request.



## SPOTLESS FLEXIBLE LED STRIP 238LED/M



Property	Value
Power consumption	48W / 72W / 95W
Input voltage	24 VDC CV
Beam angle	120°
Lumen output	105 lm/W
Dimmable	YES
Water and dust protection	IP20
Cooling	Passive
LED package	2016 LED
Dimensions	L 5m / W 10mm
Cutting dimension	2,94cm (34 groups of 7 LED)
LED/m	238
Life span	>36 000h
Certifications	CE, RoHS, UL PCB
Warranty period	3 Years
CRI	>90
MacAdam step	3

References	Power/m	Lumen/m	CCT
UP055EDN912027	9,6W	1000 lm/m	2700K
UP055EDN912030	9,6W	1000 lm/m	3000K
UP055EDN912040	9,6W	1000 lm/m	4000K
UP075EDN912027	14,4W	1500 lm/m	2700K
UP075EDN912030	14,4W	1500 lm/m	3000K
UP075EDN912040	14,4W	1500 lm/m	4000K
UP095EDN912027	19W	1980 lm/m	2700K
UP095EDN912030	19W	1980 lm/m	3000K
UP095EDN912040	19W	1980 lm/m	4000K

## **FLEXIBLE LED STRIP 70LED/M**



Property	Value
Power consumption	29W / 49W / 69W
Input voltage	24 VDC CV
Beam angle	120°
Lumen output	105 lm/W
Dimmable	YES
Water and dust protection	IP20
Cooling	Passive
LED package	2835 LED
Dimensions	L 5m / W 8mm
Cutting dimension	10cm (10 groups of 7 LED)
LED/m	70
Life span	>36 000h
Certifications	CE, RoHS, UL PCB
Warranty period	3 Years
CRI	>90
MacAdam step	3

References	Power/m	Lumen/m	CCT
UP029EDN912027	5,8W	610 lm/m	2700K
UP029EDN912030	5,8W	610 lm/m	3000K
UP029EDN912040	5,8W	610 lm/m	4000K
UP049EDN912027	9,8W	1030 lm/m	2700K
UP049EDN912030	9,8W	1030 lm/m	3000K
UP049EDN912040	9,8W	1030 lm/m	4000K
UP069EDN912027	13,8W	1450 lm/m	2700K
UP069EDN912030	13,8W	1450 lm/m	3000K
UP069EDN912040	13,8W	1450 lm/m	4000K



## FLEXIBLE LED STRIP 140LED/M



Property	Value
Power consumption	45W / 90W
Input voltage	24 VDC CV
Beam angle	120°
Lumen output	110 lm/W
Dimmable	YES
Water and dust protection	IP20
Cooling	Passive
Led package	2835 LED
Dimensions	L 5m / W 8mm
Cutting dimension	5cm (20 groups of 7 LED)
LED/m	140
Life span	>36 000h
Certifications	CE, RoHS, UL PCB
Warranty period	3 Years
CRI	>90
MacAdam step	3

References	Power/m	Lumen/m	CCT
UP045EDN912027	9W	1000 lm/m	2700K
UP045EDN912030	9W	1000 lm/m	3000K
UP045EDN912040	9W	1000 lm/m	4000K
UP090EDN912027	18W	2000 lm/m	2700K
UP090EDN912030	18W	2000 lm/m	3000K
UP090EDN912040	18W	2000 lm/m	4000K

## HIGH EFFICIENCY FLEXIBLE LED STRIP 128LED/M



Property	Value
Power consumption	140W
Input voltage	24 VDC CV
Beam angle	120°
Lumen output	135 lm/W
Dimmable	YES
Water and dust protection	IP20
Cooling	Passive
LED package	2835 LED
Dimensions	L 6m / W 10mm
Cutting dimension	6,25cm (16 groups of 8 LED)
LED/m	128
Life span	>36 000h
Certifications	CE, RoHS, UL PCB
Warranty period	3 Years
CRI	>90
MacAdam step	3

References	Power/m	Lumen/m	CCT
UP140EDN912027	23,34W	3150 lm/m	2700K
UP140EDN912030	23,34W	3150 lm/m	3000K
UP140EDN912040	23,34W	3150 lm/m	4000K
UP140EDN912060	23,34W	3150 lm/m	6000K



## LONG LENGTH FLEXIBLE LED STRIP 120LED/M



Property	Value
Power consumption	128W / 256W
Input voltage	48 VDC CV
Beam angle	120°
Lumen output	115 lm/W
Dimmable	PWM only
Water and dust protection	IP20
Cooling	Passive
LED package	2835 LED
Dimensions*	L 15m / W 10mm
Cutting dimension	12,5cm (8 groups of 15 LED)
LED/m	120
Life span	>36 000h
Certifications	CE, RoHS
Warranty period	3 Years
CRI	>90
MacAdam step	3

References	Power/m	Lumen/m	CCT
UP128EDQ912027	8,5W	1000 lm/m	2700K
UP128EDQ912030	8,5W	1000 lm/m	3000K
UP128EDQ912040	8,5W	1000 lm/m	4000K
UP256EDQ912027	17W	2000 lm/m	2700K
UP256EDQ912030	17W	2000 lm/m	3000K
UP256EDQ912040	17W	2000 lm/m	4000K

\* The strip might require to be cutted at regular intervalls to create a strain relief to avoid unpreictable breaks due to the led profiles dilatation.

## RGBW FLEXIBLE LED STRIP 84LED/M



Property	Value
Power consumption	115W
Input voltage	24 VDC CV
Beam angle	120°
Dimmable	YES
Water and dust protection	IP20
Cooling	Passive
Led package	5050 LED (4 in 1 dice)
Dimensions	L 5m / W 12mm
Cutting dimension	8,33cm (12 groups of 7 LED)
LED/m	84
Life span	>36 000h
Certifications	CE, RoHS, UL PCB
Warranty period	3 Years

References	Power/m	Lumen/m	Color
UP115EDN91204C	23W	R: 218 lm/m	RGB-CW (6000K)
		G: 504 lm/m	
		B: 1000 lm/m	
		W: 588 lm/m	
UP115EDN91204W	23W	R: 218 lm/m	RGB-WW (2700K)
		G: 504 lm/m	
		B: 1000 lm/m	
		W: 500 lm/m	



## RGB FLEXIBLE LED STRIP 126LED/M



Property	Value
Power consumption	86W
Input voltage	24 VDC CV
Beam angle	120°
Dimmable	YES
Water and dust protection	IP20
Cooling	Passive
LED package	3535 LED (3 in 1 dice)
Dimensions	L 5m / W 10mm
Cutting dimension	5,55cm (18 groups of 7 LED)
LED/m	126
Life span	>36 000h
Certifications	CE, RoHS, UL PCB
Warranty period	3 Years

References	Power/m	Lumen/m	Color
UP086EDN91203C	17,2W	R: 226 lm/m G: 529 lm/m B: 107 lm/m	RGB

## TUNABLE WHITE FLEXIBLE LED STRIP 112LED/M



Property	Value
Power consumption	96W
Input voltage	24 VDC CV
Beam angle	120°
Lumen output	95 lm/W
Dimmable	YES
Water and dust protection	IP20
Cooling	Passive
LED package	3527 LED (2 in 1 dice)
Dimensions	L 5m / W 10mm
Cutting dimension	6,25cm (16 groups of 7 LED)
LED/m	112
Life span	>36 000h
Certifications	CE, RoHS, UL PCB
Warranty period	3 Years
CRI	>80

References	Power/m	Lumen/m	CCT
UP096EDN91202C	19,2W	1800 lm/m	2200K / 6500K

# COLOR FLEXIBLE LED STRIP



Property	Value
Power consumption	140W
Input voltage	24 VDC CV
Beam angle	120°
Dimmable	YES
Water and dust protection	IP20
Cooling	Passive
Dimensions	L 6m / W 12mm
Life span	>36 000h
Certifications	CE, RoHS
Warranty period	3 Years

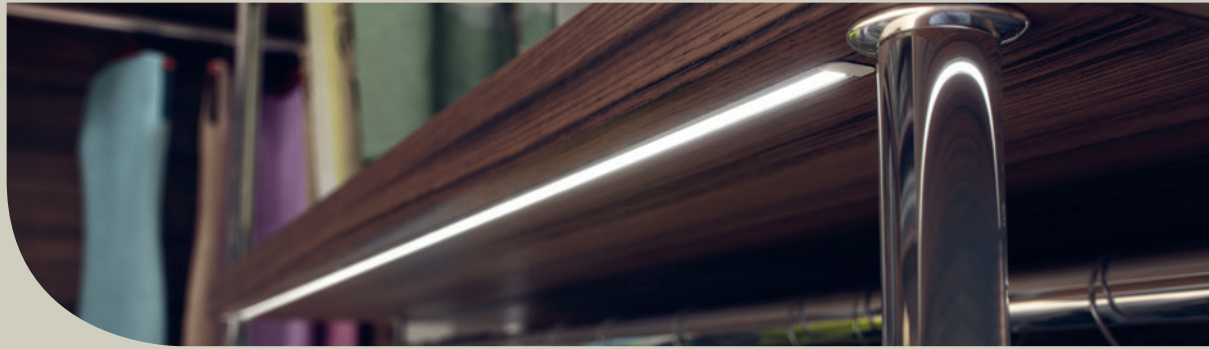
References	Color*	Wavelength	LED/m	LED/cut
UP141EDN9120CR	Cherry Red	660-665nm	176 LED/m	12,5cm (8 groups of 22 LED)
UP141EDN9120RE	Red	635-645nm	176 LED/m	12,5cm (8 groups of 22 LED)
UP141EDN9120AM	Amber	590-595nm	176 LED/m	12,5cm (8 groups of 22 LED)
UP141EDN9120GR	Green	520-530nm	140 LED/m	10cm (10 groups of 14 LED)
UP141EDN9120CY	Cyan	475-485nm	140 LED/m	10cm (10 groups of 14 LED)
UP141EDN9120BL	Blue	470-475nm	140 LED/m	10cm (10 groups of 14 LED)
UP141EDN9120RB	Royal Blue	450-455nm	140 LED/m	10cm (10 groups of 14 LED)
UP141EDN9120DB	Deep Blue	430-440nm	140 LED/m	10cm (10 groups of 14 LED)
UP141EDN9120VI	Violet	395-405nm	140 LED/m	10cm (10 groups of 14 LED)

\*The PCB can be used for dual color LED strip (e.g. Cherry Red + Amber or Green + Royal Blue).





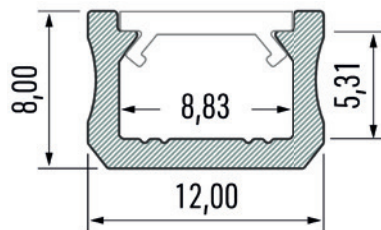




## ALUMINIUM PROFILES

# ALUMINIUM PROFILES

## ALUMINIUM LED PROFILE 1208 (X)



### Standard dimensions\*

- › 2020 mm
- LED strip width
- › Up to 8 mm
- Color variations\*\*
- › Anodized silver

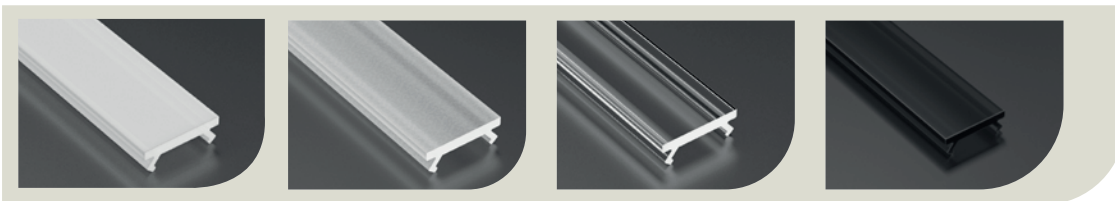
### Mounting

- › Two-sided adhesive tape & mounting clips

### Application

- › surface-mounted profile for discreet lighting in kitchens and stores
- › Ideal for countertops handrails & as backlighting in furniture

### Covers



Slim Milky  
Transparency: 39%

Slim Frosted  
Transparency: 79%

Slim Transparent  
Transparency: 95%

PMMA Black  
Transparency: 25%

### Endcaps



ZENDCAPCOV1208

ZENDCAPCOH1208

### Extras



Clip

Hinge

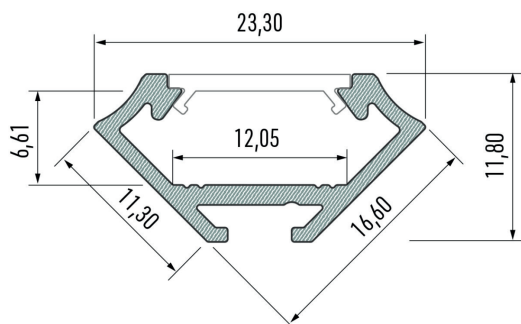
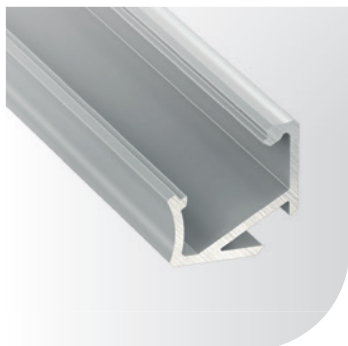
References	Description
ZALUPRO1208X2M	Anodized Aluminium LED profile X, 12x8mmx2m
ZTRACOM1208X2M	Milky PMMA cover, 2m, for profile 1208
ZTRACOF1208X2M	Frozen PMMA cover, 2m, for profile 1208
ZTRACOV1208X2M	Transparent PMMA cover, 2m, for profile 1208
ZENDCAPCOV1208	Grey plastic end cap without hole, for profile 1208
ZENDCAPCOH1208	Grey plastic end cap with hole, for profile 1208
ZALPROHINGE001	Hinge
ZALPROCLIP1208	Transparent plastic clip, for profile 1208

\*other sizes on request

\*\*other colors on request : non-anodized, anodized black, anodized inox, lacquered white (RAL9016)



# ALUMINIUM LED PROFILE 1616 (C)



## Standard dimensions\*

› 2020 mm

## LED strip width

› Up to 12 mm

## Color variations\*\*

› Anodized silver

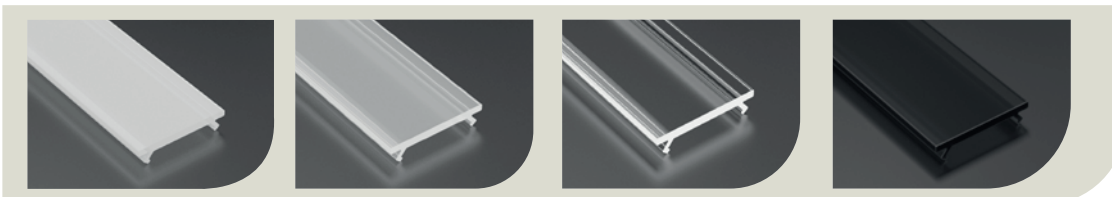
## Mounting

› Two-sided adhesive tape, mounting clips & pendants

## Application

› Angle profile 45 degrees for lighting in kitchens and stores  
Ideal for shelves & countertops

## Covers



Basic Milky  
Transparency: 51%

Basic Frosted  
Transparency: 78%

Basic Transparent  
Transparency: 95%

PMMA Black  
Transparency: 25%

## Endcaps



ZENDCAPCOV1616

ZENDCAPCOH1616

## Extras



Contactless switch

Hinge

Pendant

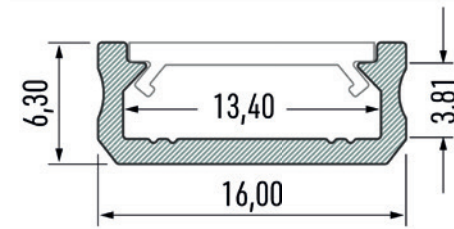
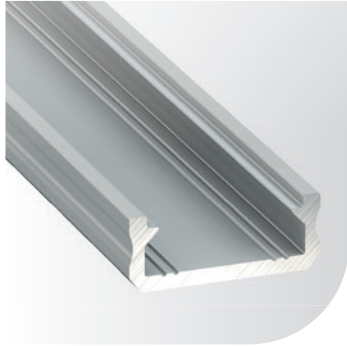
Clip

References	Description
ZALUPRO1616X2M	Anodized Aluminium LED profile C 45°, 16x16mmx2m
ZTRACOMPOLYX2M	Milky PMMA cover, 2m, for profiles 1606, 1609, 1616, 2109, 2207, 1718, 2218
ZTRACOFPOLYX2M	Frozen PMMA cover, 2m, for profiles 1606, 1609, 1616, 2109, 2207, 1718, 2218
ZTRACOVPOLYX2M	Transparent PMMA cover, 2m, for profiles 1606, 1609, 1616, 2109, 2207, 1718, 2218
ZENDCAPCOV1616	Grey plastic end cap without hole, for profile 1616
ZENDCAPCOH1616	Grey plastic end cap with hole, for profile 1616
ZALPROSWITCH	Contactless switch for LED profile
ZALPROHINGE001	Hinge
ZALPROPENDANTA	Pendant 1500mm
ZALPROCLIP1616	Transparent plastic clip, for profile 1616

\*other sizes on request

\*\*other colors on request : non-anodized, anodized black, anodized inox, lacquered white (RAL9016)

# ALUMINIUM LED PROFILE 1606 (D)



## Standard dimensions\*

› 2020 mm

## LED strip width

› Up to 12 mm

## Color variations\*\*

› Anodized silver

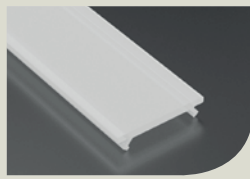
## Mounting

› Two-sided adhesive tape & mounting clips

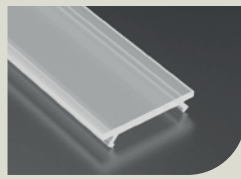
## Application

› Surface-mounted profile for lighting in kitchens and stores  
Ideal for shelves, countertops & stairs

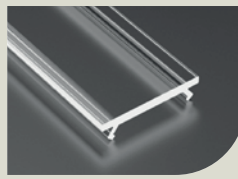
## Covers



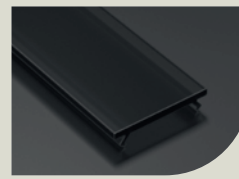
Basic Milky  
Transparency: 51%



Basic Frosted  
Transparency: 78%



Basic Transparent  
Transparency: 95%



PMMA Black  
Transparency: 25%

## Endcaps



ZENDCAPCOV1606



ZENDCAPCOH1606

## Extras



Hinge



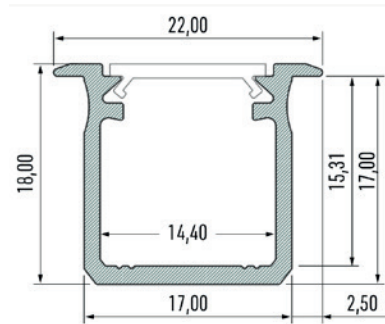
Clip

References	Description
ZALUPRO1606X2M	Anodized Aluminium LED profile D, 16x6mmx2m
ZTRACOMPOLYX2M	Milky PMMA cover, 2m, for profiles 1606, 1609, 1616, 2109, 2207, 1718, 2218
ZTRACOPPOLYX2M	Frosted PMMA cover, 2m, for profiles 1606, 1609, 1616, 2109, 2207, 1718, 2218
ZTRACOVPOLYX2M	Transparent PMMA cover, 2m, for profiles 1606, 1609, 1616, 2109, 2207, 1718, 2218
ZENDCAPCOV1606	Grey plastic end cap without hole, for profile 1606
ZENDCAPCOH1606	Grey plastic end cap with hole, for profile 1606
ZALPROHINGE001	Hinge
ZALPROCLIP1606	Transparent plastic clip, for profile 1606

\*other sizes on request

\*\*other colors on request : non-anodized, anodized black, anodized inox, lacquered white (RAL9016)

# ALUMINIUM LED PROFILE 2218 (G)



## Standard dimensions\*

› 2020 mm

## LED strip width

› Up to 12 mm

## Color variations\*\*

› Anodized silver

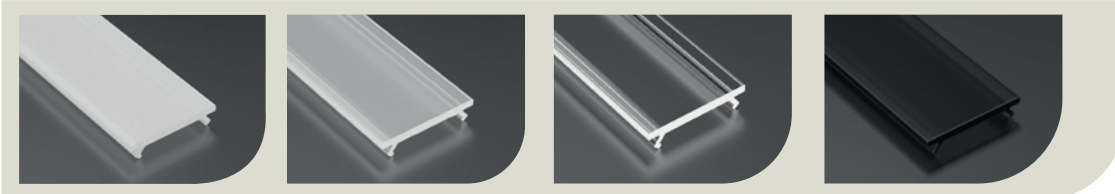
## Mounting

› Pressed on to the milled hole or by adhesive mounting

## Application

› Groove mounted profile for lighting in kitchens and stores  
Ideal for shelves, countertops & stairs

## Covers



Basic Milky  
Transparency: 51%

Basic Frosted  
Transparency: 78%

Basic Transparent  
Transparency: 95%

PMMA Black  
Transparency: 25%

## Endcaps



ZENDCAPCOH2218

## Extras



Contactless switch

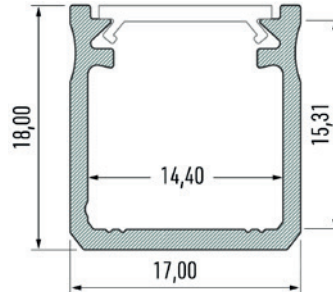
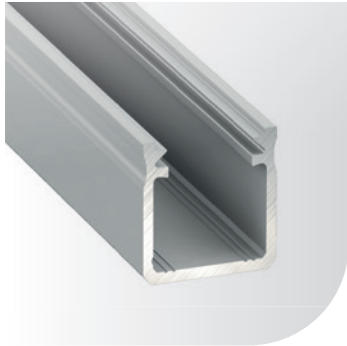
References	Description
ZALUPRO2218X2M	Anodized Aluminium recessed LED profile G, 22x18mmx2m
ZTRACOMPOLYX2M	Milky PMMA cover, 2m, for profiles 1606, 1609, 1616, 2109, 2207, 1718, 2218
ZTRACOPPOLYX2M	Frozen PMMA cover, 2m, for profiles 1606, 1609, 1616, 2109, 2207, 1718, 2218
ZTRACOVPOLYX2M	Transparent PMMA cover, 2m, for profiles 1606, 1609, 1616, 2109, 2207, 1718, 2218
ZENDCAPCOH2218	Grey plastic end cap with hole, for profile 2218
ZALPROSWITCH	Contactless switch for LED profile

\*other sizes on request

\*\*other colors on request : non-anodized, anodized black, anodized inox, lacquered white (RAL9016)



# ALUMINIUM LED PROFILE 1718 (Y)



## Standard dimensions\*

› 2020 mm

## LED strip width

› Up to 12 mm

## Color variations\*\*

› Anodized silver

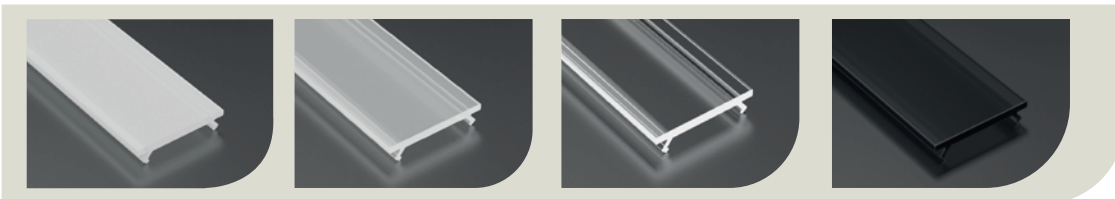
## Mounting

› Two-sided adhesive tape, mounting clips & pendants

## Application

› Surface-mounted profile for household, office room illumination, lighting of columns & countertops

## Covers



Basic Milky  
Transparency: 51%

Basic Frosted  
Transparency: 78%

Basic Transparent  
Transparency: 95%

PMMA Black  
Transparency: 25%

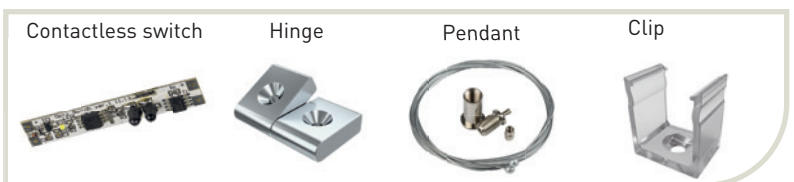
## Endcaps



ZENDCAPCOV1718

ZENDCAPCOH1718

## Extras



Contactless switch

Hinge

Pendant

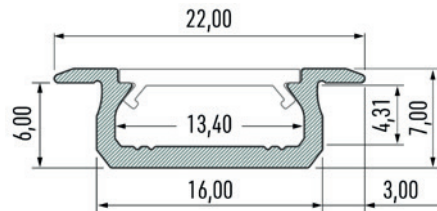
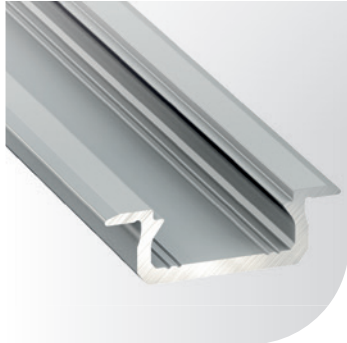
Clip

References	Description
ZALUPR01718X2M	Anodized Aluminium LED profile Y, 17x18mmx2m
ZTRACOMPOLYX2M	Milky PMMA cover, 2m, for profiles 1606, 1609, 1616, 2109, 2207, 1718, 2218
ZTRACOFPOLYX2M	Frosted PMMA cover, 2m, for profiles 1606, 1609, 1616, 2109, 2207, 1718, 2218
ZTRACOVPOLYX2M	Transparent PMMA cover, 2m, for profiles 1606, 1609, 1616, 2109, 2207, 1718, 2218
ZENDCAPCOV1718	Grey plastic end cap without hole, for profile 1718
ZENDCAPCOH1718	Grey plastic end cap with hole, for profile 1718
ZALPROSWITCH	Contactless switch for LED profile
ZALPROHINGE001	Hinge
ZALPROPENDANTA	Pendant 1500mm
ZALPROCLIP1718	Transparent plastic clip, for profile 1718

\*other sizes on request

\*\*other colors on request : non-anodized, anodized black, anodized inox, lacquered white (RAL9016)

# ALUMINIUM LED PROFILE 2207 (Z)



## Standard dimensions\*

› 2020 mm

## LED strip width

› Up to 12 mm

## Color variations\*\*

› Anodized silver

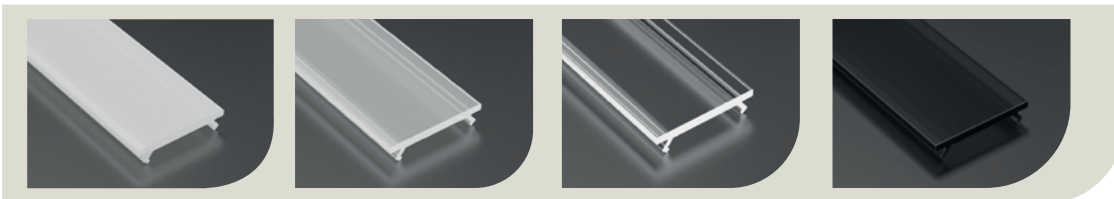
## Mounting

› Pressed on to the milled hole or by adhesive mounting

## Application

› Groove mounted profile for lighting in kitchens and stores  
Ideal for shelves & countertops

## Covers



Basic Milky  
Transparency: 51%

Basic Frosted  
Transparency: 78%

Basic Transparent  
Transparency: 95%

PMMA Black  
Transparency: 25%

## Endcaps

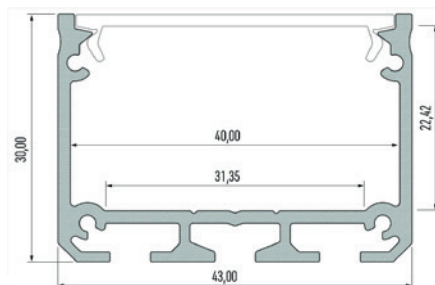


References	Description
ZALUPR02207X2M	Anodized Aluminium recessed LED profile Z, 22x7mmx2m
ZTRACOMPOLYX2M	Milky PMMA cover, 2m, for profiles 1606, 1609, 1616, 2109, 2207, 1718, 2218
ZTRACOFPOLYX2M	Frozen PMMA cover, 2m, for profiles 1606, 1609, 1616, 2109, 2207, 1718, 2218
ZTRACOVPOLYX2M	Transparent PMMA cover, 2m, for profiles 1606, 1609, 1616, 2109, 2207, 1718, 2218
ZENDCAPCOH2207	Grey plastic end cap with hole, for profile 2207

\*other sizes on request

\*\*other colors on request : non-anodized, anodized black, anodized inox, lacquered white (RAL9016)

# ALUMINIUM LED PROFILE 4330 (ILED0)



## Standard dimensions\*

› 2020 mm

## LED strip width

› 3 x 10 mm

## Color variations\*\*

› Anodized silver

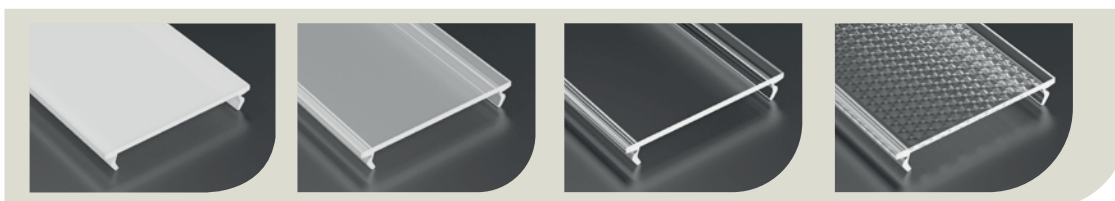
## Mounting

› Two-sided adhesive tape, mounting screws & pendants

## Application

› Surface mounted profile for lighting in offices, stores and homes  
Ideal for hanging & architectural lighting

## Covers



Wide Milky  
Transparency: 42%

Wide Frosted  
Transparency: 73%

Wide Transparent  
Transparency: 94%

Wide PC Prisma  
Transparency: 87%

## Endcaps



ZENDCAPCOV4330

ZENDCAPCOH4330

## Extras



Pendant

## References

## Description

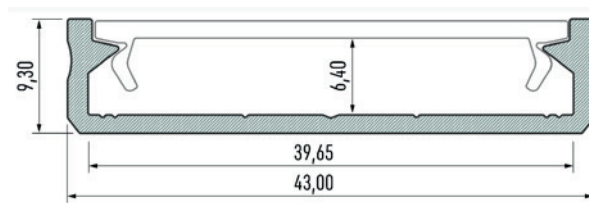
ZALUPRO4330X2M	Anodized Aluminium LED profile ILED0, 43x30mmx2m
ZTRACOMWIDEX2M	Milky PMMA cover, 2m, for wide profiles
ZTRACOFWIDEX2M	Frosted PMMA cover, 2m, for wide profiles
ZTRACOVWIDEX2M	Transparent PMMA cover, 2m, for wide profiles
ZTRACOPWIDEX2M	Prismatic PC cover, 2m, for wide profiles
ZENDCAPCOV4330	Grey plastic end cap without hole, for profile 4330
ZENDCAPCOH4330	Grey plastic end cap with hole, for profile 4330
ZALPROPENDANTA	Pendant 1500mm

\*other sizes on request

\*\*other colors on request : lacquered white (RAL9016)



# ALUMINIUM LED PROFILE 4310 (SOLIS)



## Standard dimensions\*

› 2020 mm

## LED strip width

› 3 x 10 mm

## Color variations\*\*

› Anodized silver

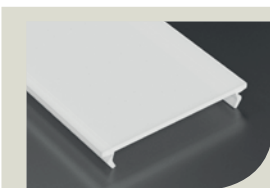
## Mounting

› Two-sided adhesive tape & pendants

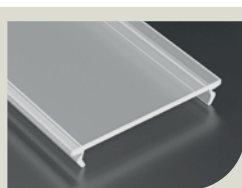
## Application

› Surface-mounted profile for household and office room illumination  
Perfect for hanging lighting

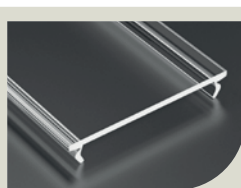
## Covers



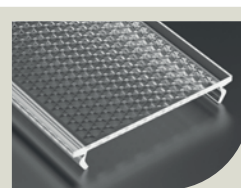
Wide Milky  
Transparency: 42%



Wide Frosted  
Transparency: 73%



Wide Transparent  
Transparency: 94%



Wide PC Prisma  
Transparency: 87%

## Endcaps



ZENCAPCOV4310

ZENCAPCOH4310

## Extras



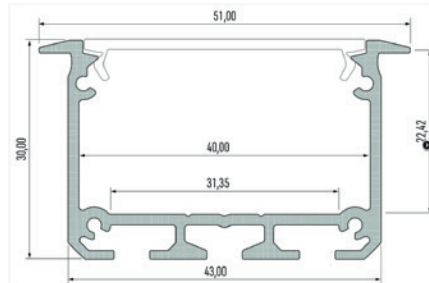
Pendant

References	Description
ZALUPRO4310X2M	Anodized Aluminium LED profile SOLIS, 43x10mmx2m
ZTRACOMWIDEX2M	Milky PMMA cover, 2m, for wide profiles
ZTRACOFWIDEX2M	Frozen PMMA cover, 2m, for wide profiles
ZTRACOVWIDEX2M	Transparent PMMA cover, 2m, for wide profiles
ZTRACOPWIDEX2M	Prismatic PC cover, 2m, for wide profiles
ZENDCAPCOV4310	Grey plastic end cap without hole, for profile 4310
ZENDCAPCOH4310	Grey plastic end cap with hole, for profile 4310
ZALPROPENDANTA	Pendant 1500mm

\*other sizes on request

\*\*other colors on request : non-anodized, anodized black, anodized inox, lacquered white (RAL9016)

# ALUMINIUM LED PROFILE 5130 (INSO)



## Standard dimensions\*

› 2020 mm

## LED strip width

› 3 x 10 mm

## Color variations\*\*

› Anodized silver

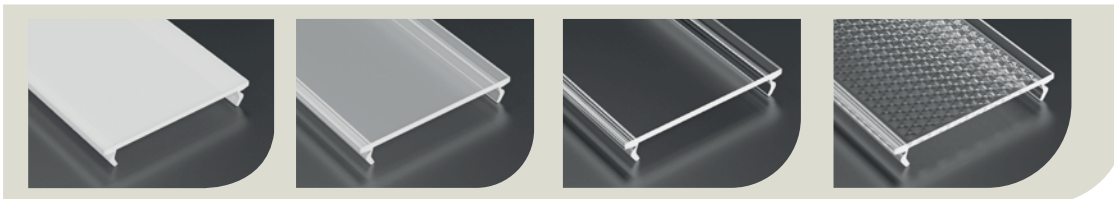
## Mounting

› Pressed on to the milled groove, mounting glue & mounting springs

## Application

› Groove mounted profile for lighting in offices, stores and homes  
Ceiling and wall mounted lighting

## Covers



Wide Milky  
Transparency: 42%

Wide Frosted  
Transparency: 73%

Wide Transparent  
Transparency: 94%

Wide PC Prisma  
Transparency: 87%

## Endcaps



ZENDCAPCOV5130

## Extras



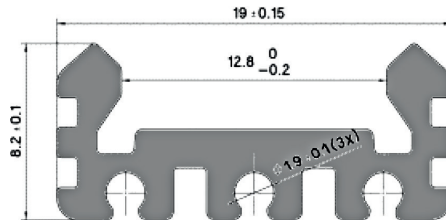
Mounting springs

References	Description
ZALUPR05130X2M	Anodized Aluminium recessed LED profile INSO, 51x30mmx2m
ZTRACOMWIDEX2M	Milky PMMA cover, 2m, for wide profiles
ZTRACOFWIDEX2M	Frozen PMMA cover, 2m, for wide profiles
ZTRACOVWIDEX2M	Transparent PMMA cover, 2m, for wide profiles
ZTRACOPWIDEX2M	Prismatic PC cover, 2m, for wide profiles
ZENDCAPCOV5130	Grey plastic end cap without hole, for profile 5130
ZALPROSPRING	Mounting springs for recessed LED profiles

\*other sizes on request

\*\*other colors on request : lacquered white (RAL9016)

# ALUMINIUM LED PROFILE 1911



## Standard dimensions\*

› 2020 mm

## LED strip width

› Up to 12 mm

## Color variations\*\*

› Anodized silver

## Mounting

› Mounting clips

## Application

› Multi-purpose generic rail

## Covers



Convex Frosted

Convex Transparent

## Endcaps



IENDCAPCOW1911

IENDCAPCOT1911

IENDCAPCONUT01

## Extras



Clip

References	Description
IALUPRO1911X2M	Arditi Aluminium LED profile, 19x8mmx2m
ITRACOF1911X2M	Arditi polycarbonate frosted cover, 2m, for profile 1911
ITRACOV1911X2M	Arditi polycarbonate clear cover, 2m, for profile 1911
IENDCAPCOW1911	Arditi closed cap, for profile 1911
IENDCAPCOT1911	Arditi open cap with thread, for profile 1911
IENDCAPCONUT01	Arditi nut for open cap with thread
IALPROCLIP1911	Arditi fixing clip, for profile 1911

\*other sizes on request

\*\*other colors on request : lacquered white (RAL9016)







## POWER SUPPLIES

## LOW POWER ARDITI DRIVER (CV)



Property	Value
Power	20W / 30W / 50W / 75W
Input voltage	220-240VAC
Frequency	50-60Hz
Mode	Constant voltage
Output voltage	12V, 24V
Dimmable	No
IP level	IP20
PFC	Depending on model
Protection	Short circuit / over load / over temperature
Warranty	2 years

References	DC voltage	Current	Power	Dimensions
I401295	12V	1,67A	20W	154x50x14mm
I401292	12V	2,5A	30W	160x58x18mm
I401297	12V	4,17A	50W	185x64x22mm
I401364	12V	6,25A	75W	180x52x30mm
I401296	24V	0,84A	20W	154x50x14mm
I401286	24V	1,25A	30W	160x58x18mm
I401298	24V	2,08A	50W	185x64x22mm
I401365	24V	3,12A	75W	180x52x30mm

## LOW POWER MW DRIVER / LPV SERIES (CV)



Property	Value
Power	20W / 36W / 60W / 100W / 150W
Input voltage	100-264VAC / 127-370VDC 180-305VAC / 254-431VDC (150W driver)
Frequency	47-63Hz
Mode	Constant voltage
Output voltage	5V, 12V, 15V, 24V, 36V, 48V
Dimmable	No
IP level	IP67
PFC	No
Protection	Short circuit / over load / over voltage
Warranty	2 years

References	DC voltage	Current	Power	Dimensions
6MWLPV00200024	24V	0,84A	20,2W	118x35x26mm
6MWLPV00350024	24V	1,5A	36W	148x40x30mm
6MWLPV00600024	24V	2,5A	60W	162,5x42,5x32mm
6MWLPV01000024	24V	4,2A	100,8W	190x52x37mm
6MWLPV01500024	24V	6,3A	151,2W	191x63x37,5mm

# LOW POWER DIMMABLE MW DRIVER / NPF SERIES (CV)



Property	Value
Power	40W / 60W / 90W / 120W
Input voltage	100-305VAC / 127-431VDC
Frequency	47-63Hz
Mode	Constant voltage with constant current region
Output voltage	12V, 15V, 20V, 24V, 30V, 36V, 42V, 48V, 54V
Dimmable	3 in 1 dimming function (dim-to-off) (0-10VDC, 10V PWM signal and resistance)
IP level	IP67
PFC	Built-in active PFC function
Protection	Short circuit / over current / over voltage / over temperature
Warranty	5 years

## Remarks

- › Class II design
- › Standby power consumption <0,5W

	References	DC voltage	Current	Power	Dimensions
Non dimmable	6MWNPF00400024	24V	1,67A	40W	150x53x35mm
	6MWNPF00600024	24V	2,5A	60W	150x53x35mm
	6MWNPF00900024	24V	3,75A	90W	171x63x37,5mm
	6MWNPF01200024	24V	5A	120W	191x63x37,5mm
Dimmable	6MWNPFD0400024	24V	1,67A	40W	150x53x35mm
	6MWNPFD0600024	24V	2,5A	60W	150x53x35mm
	6MWNPFD0900024	24V	3,75A	90W	171x63x37,5mm
	6MWNPFD1200024	24V	5A	120W	191x63x37,5mm
	6MWNPFD1200024	24V	5A	120W	191x63x37,5mm



# PWM OUTPUT DIMMABLE MW DRIVER / PWM SERIES (CV)



Property	Value
Power	40W / 60W / 90W / 120W
Input voltage	100-305VAC / 127-431VDC
Frequency	47-63Hz
Mode	Constant voltage PWM output
Dimmable	DALI, 3 in 1 dimming function (dim-to-off) (0-10VDC, 10V PWM signal and resistance)
Output voltage	12V, 24V, 36V, 48V
IP level	IP67
PFC	Built-in active PFC function
Protection	Short circuit / over current / over voltage / over temperature
Warranty	5 years

## Remarks

- › Class II design
- › Standby power consumption <0,5W

	References	DC voltage	Current	Power	Dimensions
Dimmable	6MWPWM00400024	24V	1,67A	40W	150x53x35mm
	6MWPWM00600024	24V	2,5A	60W	150x53x35mm
	6MWPWM00900024	24V	3,75A	90W	171x63x37,5mm
	6MWPWM01200024	24V	5A	120W	191x63x37,5mm
DALI	6MWPWMD0600024	24V	2,5A	60W	150x53x35mm
	6MWPWMD0900024	24V	3,75A	90W	171x63x37,5mm
	6MWPWMD1200024	24V	5A	120W	191x63x37,5mm

## MAINS DIMMABLE ARDITI DRIVER (CV)



Property	Value
Power	60W / 80W
Input voltage	220-240VAC
Frequency	50-60Hz
Mode	Constant voltage
Dimmable	Mains dimmable
IP level	IP65
PFC	Built-in active PFC function
Protection	Short circuit / over temperature
Warranty	2 years

### Remarks

- › Dimmable by external dimmers with leading or trailing edge
- › We recommend the following products (non-binding; always test before use): NIKO 31001300, LEGRAND CELIANE 670184 & NIKO 33000700
- › The load must not fall below the minimum load of the dimmer
- › With lower LED load the dimming range is smaller
- › Only connect LEDs in parallel
- › Do not insert switches into the secondary circuit

References	DC voltage	Current	Power	Dimensions
I800594	12V	5A	60W	210x71x46mm
I800596	12V	6,67A	80W	210x71x46mm
I800595	24V	2,5A	60W	210x71x46mm
I800597	24V	3,33A	80W	210x71x46mm

# HIGH POWER DIMMABLE MW DRIVER / ELG SERIES (CV + CC)



Property	Value
Power	75W / 100W / 150W / 200W / 240W / 300W
Input voltage	200-305VAC / 142-431VDC
Frequency	47-63Hz
Mode	Constant voltage with constant current region
Dimmable	DALI, 3 in 1 dimming function (dim-to-off) (0-10VDC, 10V PWM signal and resistance)
IP level	IP65 (tunable drivers) / IP67
PFC	Built-in active PFC function
Protection	Short circuit / over current / over voltage / over temperature
Warranty	5 years

## Remarks

- › Io and Vo adjustable through built-in potentiometer
- › Metal housing with class I design
- › Standby power consumption <0,5W

	References	DC voltage	Current	Power	CC region	Dimensions
Tunable	6MWELGA0750024	24V	3,15A	75,6W	12-24V	180x63x35,5mm
	6MWELGA1000024	24V	4A	96W	12-24V	199x63x35,5mm
	6MWELGA1500024	24V	6,25A	150W	12-24V	219x63x35,5mm
	6MWELGA2000024	24V	8,4A	201,6W	12-24V	244x71x37,5mm
	6MWELGA2400024	24V	10A	240W	12-24V	244x71x37,5mm
	6MWELGA3000024	24V	12,5A	300W	12-24V	246x71x39,5mm
Dimmable	6MWELGB0750024	24V	3,15A	75,6W	12-24V	180x63x35,5mm
	6MWELGB1000024	24V	4A	96W	12-24V	199x63x35,5mm
	6MWELGB1500024	24V	6,25A	150W	12-24V	219x63x35,5mm
	6MWELGB2000024	24V	8,4A	201,6W	12-24V	244x71x37,5mm
	6MWELGB2400024	24V	10A	240W	12-24V	244x71x37,5mm
	6MWELGD0750024	24V	3,15A	75,6W	12-24V	180x63x35,5mm
DALI	6MWELGD1000024	24V	4A	96W	12-24V	199x63x35,5mm
	6MWELGD1500024	24V	6,25A	150W	12-24V	219x63x35,5mm
	6MWELGD2000024	24V	8,4A	201,6W	12-24V	244x71x37,5mm
	6MWELGD2400024	24V	10A	240W	12-24V	244x71x37,5mm
	6MWELGX0750024	24V	3,15A	75,6W	12-24V	180x63x35,5mm
	6MWELGX1000024	24V	4,00A	96W	12-24V	199x63x35,5mm
Tunable & Dimmable	6MWELGX1500024	24V	6,25A	150W	12-24V	219x63x35,5mm
	6MWELGX2000024	24V	8,4A	201,6W	12-24V	244x71x37,5mm
	6MWELGX2400024	24V	10A	240W	12-24V	244x71x37,5mm
	6MWELGX2400024	24V	10A	240W	12-24V	244x71x37,5mm

# HIGH POWER DIMMABLE MW DRIVER / HLG SERIES (CV + CC)



Property	Value
Power	320W / 480W / 600W
Input voltage	~90-305VAC / 127-431VDC
Frequency	47-63Hz
Mode	Constant voltage with constant current region
Output voltage	12V, 15V, 20V, 24V, 30V, 36V, 42V, 48V, 54V
Dimmable	3 in 1 dimming function (dim-to-off for 480/600W) [0/1-10VDC, 10V PWM signal and resistance]
IP level	IP65 (tunable drivers) / IP67
PFC	Built-in active PFC function
Protection	Short circuit / over current / over voltage / over temperature
Warranty	7 years

## Remarks

- › Io and Vo adjustable through built-in potentiometer
- › Metal housing with class I design
- › Standby power consumption <0,5W

References	DC voltage	Current	Power	CC region	Dimensions
6MWHLGA3200024	24V	13,34	320,16W	12-24V	252x90x43,8mm
6MWHLGA4800024	24V	20A	480W	12-24V	262x125x43,8mm
6MWHLGA6000024	24V	25A	600W	12-24V	280x144x48,5mm
6MWHLGB3200024	24V	13,34	320,16W	12-24V	252x90x43,8mm
6MWHLGB4800024	24V	20A	480W	12-24V	262x125x43,8mm
6MWHLGB6000024	24V	25A	600W	12-24V	280x144x48,5mm
6MWHLGX3200024	24V	13,34	320,16W	12-24V	252x90x43,8mm
6MWHLGX4800024	24V	20A	480W	12-24V	262x125x43,8mm
6MWHLGX6000024	24V	25A	600W	12-24V	280x144x48,5mm

Tunable  
&  
Dimmable Tunable



## DIN RAIL MW DRIVER / HDR & NDR SERIES (CV)



Property	Value
Power	15W / 30W / 60W / 100W / 150W
Input voltage	~85-277VAC / 120-370VDC
Frequency	47-63Hz
Mode	Constant voltage
Output voltage	5V, 12V, 15V, 24V, 48V
Dimmable	No
IP level	max, 90% RH non-condensing
PFC	No
Protection	Short circuit / over load / over voltage
Warranty	3 years

### Remarks

- › DIN rail TS-35/7,5 or 15 mountable
- › DC output voltage adjustable
- › Class II isolation

Property	Value
Power	75W / 120W / 240W / 480W
Input voltage	100-264VAC / 127-370VDC
Frequency	47-63Hz
Mode	Constant voltage
Output voltage	12V, 24V, 48V
Dimmable	No
IP level	max, 95% RH non-condensing
PFC	Built-in active PFC function
Protection	Short circuit / over load / over voltage / over temperature
Warranty	3 years

### Remarks

- › DIN rail TS-35/7,5 or 15 mountable
- › DC output voltage adjustable
- › UL 508 approved
- › BS EN/EN61000-6-2 ( BS EN/EN50082-2) industrial immunity level

References	DC voltage	Current	Power	Dimensions
6MWHDR00150024	24V	0,63A	15,2W	17,5x54,5x90mm
6MWHDR00300024	24V	1,5A	36W	35x54,5x90mm
6MWHDR00600024	24V	2,5A	60W	52,5x54,5x90mm
6MWHDR01000024	24V	3,83A	92W	70x54,5x90mm
6MWHDR01500024	24V	6,24A	150W	105x54,5x90mm
6MWNDR00750024	24V	3,2A	75W	32x102x125,2mm
6MWNDR01200024	24V	5A	120W	40x113,5x125,2mm
6MWNDR02400024	24V	10A	240W	63x113,5x125,2mm
6MWNDR04800024	24V	20A	480W	85,5x128,5x125,2mm

# DALI PWM SIGNAL CONVERTER



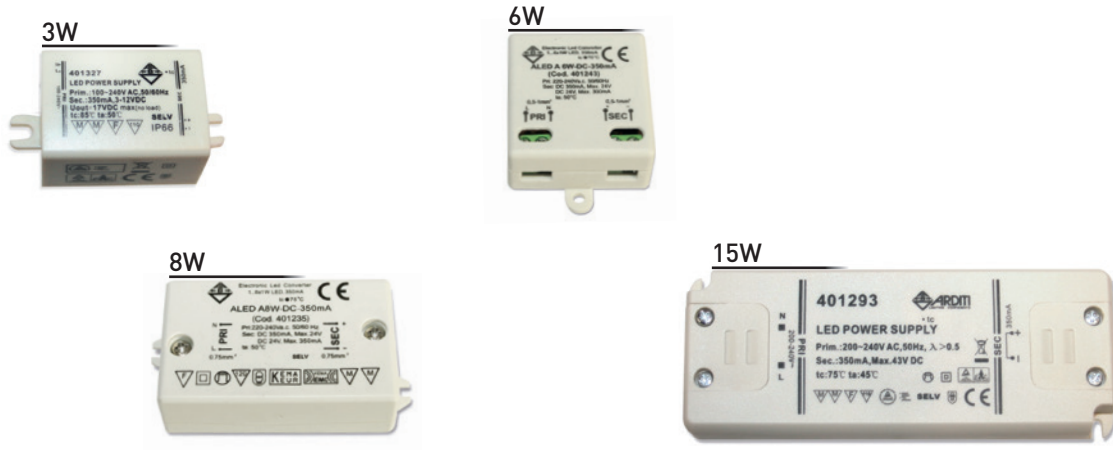
Property	Value
Power	<0,5W
Input voltage	90-305VAC / 127-431VDC
Frequency	47-63Hz
Mode	Convert DALI signal to PWM signal
Dimmable	4 DALI addressable channels
	Dimming range 1-100%
	Built-in push dim function
	Built-in relay for ON/OFF control
	Synchronization function up to 20 units
IP level	IP20
Warranty	3 years

## Remarks

- › Comply with DALI standards (IEC62386-101, 102, 207)
- › Fully isolated plastic case
- › Class II power unit, no FG

References	Description	Dimensions
6MWDAP04DALPWM	DALI to PWM signal converter	165x46x23 mm

## LOW POWER ARDITI DRIVER (CC)



Property	Value
Power	3W / 6W / 8W / 15W
Input voltage	220-240VAC
Frequency	50-60Hz
Mode	Constant current
Dimmable	No
IP level	IP66 (3W drivers) / IP20 (others)
PFC	No
Protection	Short circuit / over load / over temperature
Warranty	2 years

References	DC voltage	Current	Power	Voltage max.	Dimensions
I401327	3-12V	350mA	3W	17V	38x27x21,5mm
I401330	3-9,5V	500mA	3W	14V	38x27x21,5mm
I401331	3-6V	700mA	3W	9,5V	38x27x21,5mm
I401243	3-18V	350mA	6W	24V	49x41x21mm
I401244	3-8,5V	700mA	6W	12V	49x41x21mm
I039121	3-24V	350mA	8W	24V	58x35x21mm
I039122	3-12,5V	700mA	8W	12V	58x35x21mm
I401293	20-43V	350mA	15W	46V	128x51x14mm
I401294	11-21V	700mA	15W	24V	128x51x14mm

# MULTI POWER DIMMABLE MW DRIVER / LCM SERIES (CC)



Property	Value
Power	25W / 40W / 60W
Input voltage	200-277VAC (200-295VAC for 40/60W)
Frequency	47-63Hz
Mode	Constant current output with multiple levels selectable by dip switch
Dimmable	DALI, 3 in 1 dimming function (dim-to-off) (0-10VDC, 10V PWM signal and resistance) Synchronization function up to 10 units
IP level	IP20
PFC	Built-in active PFC function
Protection	Short circuit / over voltage / over temperature
Warranty	3 years

References	DC voltage	Current	Power	Dimensions
6MWLCM25010PWM	6-54V	350-1050mA	25W	105x68x23mm
6MWLCM40010PWM	2-100V	350-1050mA	42W	123,5x81,5x23mm
6MWLCM60010PWM	2-90V	500-1400mA	60W	123,5x81,5x23mm
6MWLCM25DALIPB	6-54V	350-1050mA	25W	105x68x23mm
6MWLCM40DALIPB	2-100V	350-1050mA	42W	123,5x81,5x23mm
6MWLCM60DALIPB	2-90V	500-1400mA	60W	123,5x81,5x23mm



# NOTES

A series of horizontal dotted lines spanning the width of the page, intended for taking notes. The background is a grayscale photograph of a modern hallway with a concrete wall on the right, glass partitions on the left, and recessed linear lighting in the ceiling.



 **colasse**  
**Led Lighting Solutions**

---

Rue Puits-Marie 79 - 4100 Seraing - Belgium - [www.colasse.be](http://www.colasse.be)  
info@colasse.be - Phone : +32 4 225 25 89 - Fax : +32 4 365 13 76